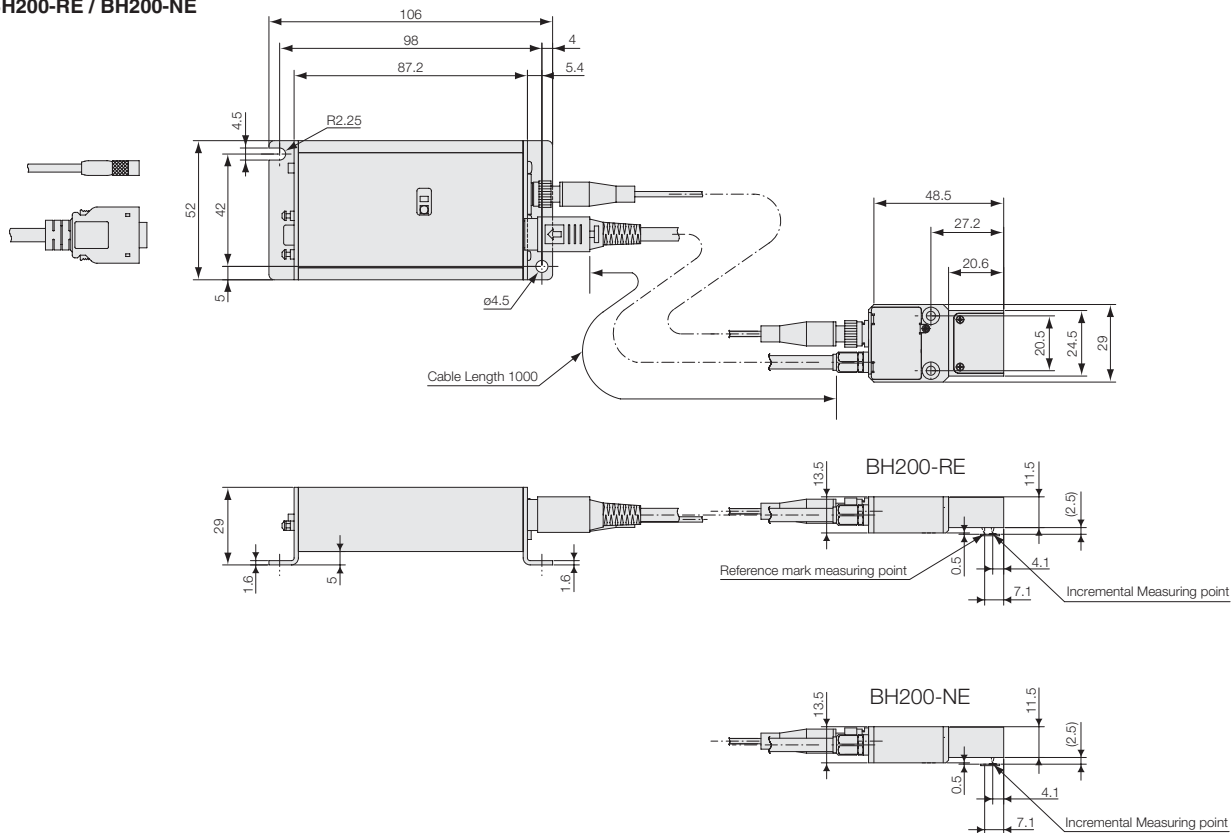


● BH200-RE / BH200-NE



Unit: mm

Main specifications

Model	BH200-RE	BH200-NE
Zero point ¹	Asynchronous, unidirectional detection	None
Detection method	Grating interferometer	
Light source	Semiconductor laser Wavelength: 790nm Output: 6mW or less	
Pulse number/scale radius	907,200 pulses, scale detection radius: 36.1mm	
Response speed	10MHz to 200MHz(660rpm to 13,000min ⁻¹)	
Category temperature range	10 °C~30 °C (head) 0 °C~50 °C (detector part)	
Storage temperature range	Thing to avoid high humidity there is no 10°C~50°C be dewy	
The maximum response speed	13,000min ⁻¹	
Head angular tolerance	Pitching	±10min(output ±40%)
	Azimuth	±10min(output ±40%)
	Rolling	±10min(output ±40%)
Head position tolerance	△ X	±70µm(output ±40%)
	△ Y	±70µm(output ±40%)
	△ Z	±50µm(output ±40%)
Output signal	CLK signal(LVDS), 1/2 or 1/4 CLK signal(LVDS) ²	
Input signal	Switch over 1/2 or 1/4(TTL)	
Power supply	DC ±5V(±5%)	
Maximum power consumption	DC +5V: 400mA, DC -5V: 200mA	
Operating temperature	+10 to +30 °C (head), 0 to +50 °C (detector)	
Storage temperature	-10 to +50 °C No condensation Avoid operating under high humidity	
Jitter (target) ³	0.5 nsec (@5000rpm)	
Optical fiber minimum bending radius	50mm	

¹ Zero point signal is asynchronous to CLK, 1/2CLK and 1/4CLK signals. Detection is unidirectional.

² 1/2 or 1/4 signals to CLK signal frequency. No output with input frequency of 50MHz or less. 1/2 CLK and 1/4 CLK signals cannot be used simultaneously with CLK signal.

³ Jitter of CLK signal: Pulse duration variation at 1000 pulses(3σp-p). Measured by inspection equipment at Sony Manufacturing Systems Corporation.